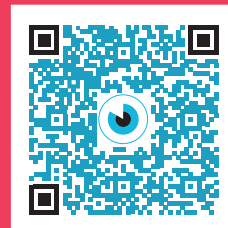


The Foundation Asile des aveugles is recognized as being of public utility. All donations from persons with fiscal residence in Switzerland are tax-deductible within applicable legal limits. For donations from abroad please contact us to discuss possible tax-efficient solutions.

For donations from outside Switzerland
IBAN CH54 0024 3243 FS15 6976 7
BIC: UBSWCHZH80A
Asile des aveugles
Av. de France 15, 1004 Lausanne
Switzerland

Contact:
dons@fa2.ch
+41 21 626 80 06
www.asile-aveugles.ch



If you wish to designate your gift to a specific project or department, kindly indicate so in the «payment purpose» field.

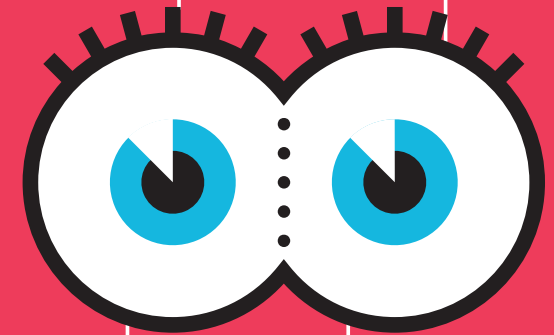


**Fondation
Asile des aveugles**
Au service de votre santé visuelle

Promoting eye health. Since 1843.

Ensuring access to
quality eye care for all

Providing
leading-edge
medical treatment
of eye diseases



Conducting research
in ophthalmology
with real-life impact

Accompanying
and empowering
visually-impaired
people of all ages



**Fondation
Asile des aveugles**
Au service de votre santé visuelle

A world-class institution in the field of vision health, the **Foundation Asile des aveugles** provides medical treatment and support to visually-impaired people, from childhood to old age. A major actor in public and community health, it promotes healthy vision through public screenings and outreach programs. The hospital is the university department of ophthalmology of the Faculty of Biology and Medicine of the University of Lausanne, and, as such, trains the next generation of ophthalmologists.

The **Rehabilitation Low Vision** department offers support and practical assistance to visually-impaired people, enhancing their autonomy and the quality of their everyday life.

Within the labs of our **Visual Science Research Center**, and in the clinic with our patients, our researchers work tirelessly to develop innovative therapies for our community.

Our **Clair-Soleil retirement home** offers a calm, reassuring, and secure environment for elderly people with visual impairment



The **Jules Gonin Eye Hospital** is home to some of the world's most renowned eye clinicians and offers cutting-edge medical treatment for an all-encompassing array of eye diseases.



The **Center of Expertise for Visual Skills** serves the educational needs of children and young people, helps them develop their own potential and contributes to their professional and social integration.



Thanks to the support of generous donors, the Foundation pursues the missions set forth by its founders by providing an integrated approach to vision health and conducting research in collaboration with institutions from around the world.

Récapissé

Compte / Payable à
CH14 0900 0000 1000 2707 0
Fondation Asile des aveugles
Av. de France 15
1004 Lausanne

Payable par (nom/adresse)

Monnaie
CHF

Montant

Point de dépôt

Section paiement



Monnaie
CHF

Montant

Compte / Payable à
CH14 0900 0000 1000 2707 0
Fondation Asile des aveugles
Av. de France 15
1004 Lausanne

Informations supplémentaires
Donation

Payable par (nom/adresse)